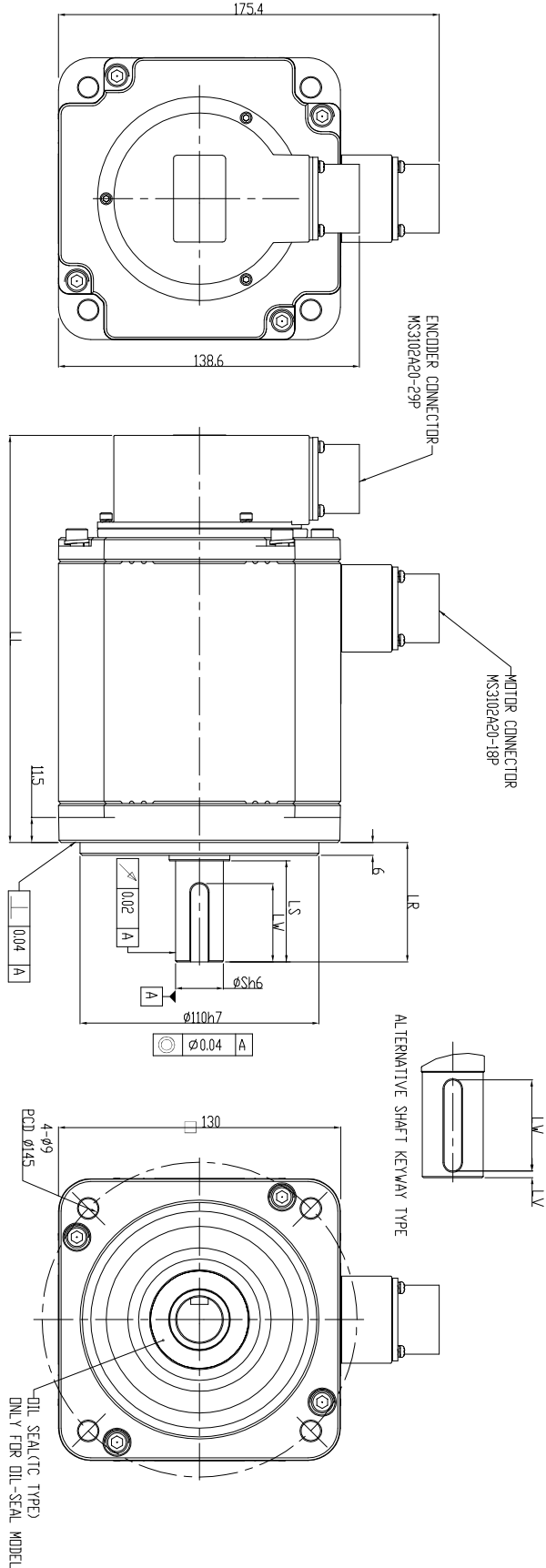
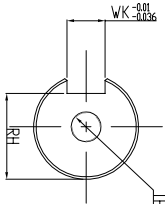
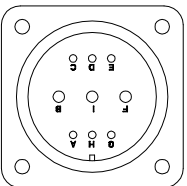
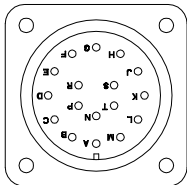


REV.	ECN NO.
V1.0	

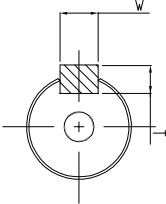


DIMENSION TABLE (MODEL WITHOUT BRAKE)

MODEL	LL	LR	LS	LW	S	LV	WK	W	T	RH	TP
ECMA-E□□320□4	187.5	55	47	36	24	---	8	8	7	20	---
ECMA-E□□320□S	187.5	55	47	36	22	---	8	8	7	18	---
ECMA-E□□320R□D	187.5	55	47	42	28	3	8	8	7	24	---



SHAFT END DETAILS



KEY DETAILS

ENCODER CONNECTOR			
FUNCTION		FUNCTION	
PIN	2500ppr 20bit	PIN	2500ppr 20bit
A	A	T+	K
B	A̅	T-	L
C	B	BAT_5V	M
D	B̅	BAT_GND	N
E	---	P	---
F	Z	R	GND
G	Z̅	S	DC+5V
H	---	T	---
J	---	---	---

MOTOR CONNECTOR	
PIN	FUNCTION
A	---
B	W PHASE
C	---
D	---
E	GND
F	U PHASE
G	---
H	---
I	V PHASE



THESE DRAWINGS AND SPECIFICATIONS ARE THE PROPERTY OF DELTA ELECTRONICS, INC. AND SHALL NOT BE REPRODUCED OR USED AS THE BASIS FOR THE MANUFACTURE OR SELL OF APPARATUS OR DEVICES WITHOUT PERMISSION.

Drawing Name: ECMA-E□□1320 □□

Drawn:	Design:
Date:	ECN No.:

DIMENSIONAL TOLERANCES

DECIMALS	ANGLES
() () () ()	() () () ()
<90 :±0.1	<90 :±0.2
>90-100 :±0.15	>90-100 :±0.25
>100-200 :±0.2	>100-200 :±0.3
>200 :±0.25	>200 :±0.3%

Part No.: REV.

USED ON	XXXXXX
UNIT	mm
SCALE	1:1
SHEET	1 OF 1
REV.	V1.0